



# POWER SUPPLY SYSTEM FOR 5G MICRO BASE STATION



- Lots of terminal stations, large challenge for power supply system.
- Installation and maintenance require miniaturization and integration of station power supply system.
- Distributed power supply solution, cover all remote and indoor etc terminal stations.

## LiFePO4 Lithium-ion Battery



Eco-friendly  
lithium battery



Over 2000 times cyclic  
charge-discharge



Over 8 years  
battery life span

**lexonloyde**

**Lexon Loyde, Inc.**  
350 Grove street  
Suite 202  
Bridgewater NJ 08807  
Phone: 908-575-0022



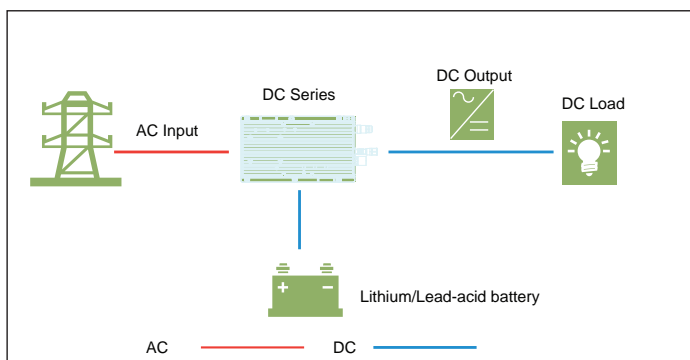
## DC SYSTEM

## AC/DC SYSTEM

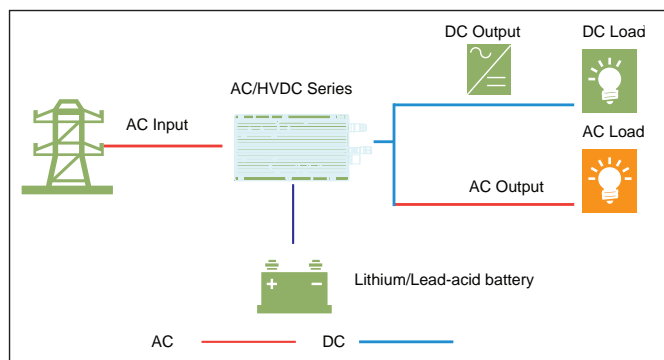


This power system mainly includes power supply module and lithium battery module. It is high efficient, compact, lightweight, easy to install. It doesn't need setting, and it's maintenance free. It also supports capacity expansion. It is specially designed for wireless base station.

SF series power supply module. When the AC input is normal, the AC output supplies power to the load through bypass, the DC output supplies 48V power to the battery. When the AC is turned off, the DC output is inverted to 220V to supply power to the load. SF power module convert AC or HVDC to steady 48V DC. Lithium battery module supply power to communication equipment. It is in compliance with UL60950-1, EN60950-1, IEC60950-1, UL50, EN60950-22, and RoHS.



SF Micro Base Station Integrated Lithium Power Supply System (-48VDC)

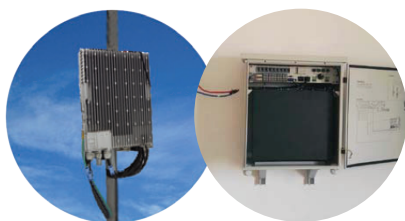


SF Micro Base Station AC/DC Integrated Lithium Power Supply System (220VAC/240VDC)

## Rapid Deployment, Easy Operation, Reliable Power Supply

### Convenient and flexible. Rapid deployment

Compact size. Lightweight.  
All applications adopt the same mounting and hardware. No need prospect.  
Quick installation by individual basic design. Battery and power supply can be installed independently. Support modular capacity expansion.  
Support multiple input. AC input, HVDC input.  
Support hanging, wall mounting, etc  
Support vertical and parallel mounting



hanging mounting

wall mounting

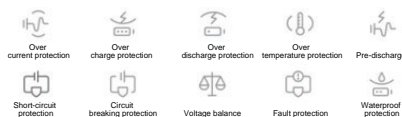
### Easy operation, easy management.

Die-casting aluminum integrated body. No fan, heat dissipation naturally.  
Good protective function. 3-5 years maintenance free.  
Input/output port and communication signal port adopt quick plug terminal.  
Plug and play. No need setting parameter and communication address.  
Support APP Bluetooth management. Easy operation wirelessly.  
Support smart remote monitor



### Reliable and steady power supply

Layered structure configuration, support single AC/single DC or AC+DC output simultaneously.  
The system adopt advanced soft switch LLC resonance technology, with high efficiency  $\geq 93\%$ , high power factor  $\geq 0.95$   
IP65 high protection level meet requirement of outside installation.  
Operating temperature  $-20^{\circ}\text{C} - 55^{\circ}\text{C}$   
High performance lithium iron phosphate with battery management system(BMS), to extend life span two times.  
Power supply module integrate rectifier, monitor, power distribution, lightning protection.  
One-stop installation platform integrated power supply, energy storage, optical distribution unit for base station.





## PRODUCT SPECIFICATIONS

Product name	DC Power Supply System		AC/DC Power Supply System	
Item	SF-DC-25	SF-DC-50	SF-AC/HDC-25	SF-AC/HDC-50
Battery dimension (L*H*W)	360*208*120	360*208*240	360*208*120	360*208*240
Weight (Kg)	15.2	28	15.2	28
Protection level	IP65			
Shell	Die-casting aluminum			
Installation	Wall mounted, Hanged			
Battery capacity	48V25Ah	48V50Ah	48V25Ah	48V50Ah
Operating temperature	-20°C~55°C(heat dissipation naturally)			
Input voltage range	90-264V AC(90-176V Output linear derating)			
Input power factor	≥0.99			
Protection	Output, input over voltage protection, short circuit protection, over load protection, over temperature protection etc.			
Output voltage	48Vdc	48Vdc	220Vac/240Vdc	
Rated output power	1080W		500W	
Output current	DC≤25A	DC≤25A	AC≤3A DC≤2A	AC≤3A DC≤2A
	Battery≤25A	Battery≤25A	_____	_____
Communication	Dry contact(AC dump alarm, DC low voltage fault alarm), RS485, Mobile phone APP control(Bluetooth transmission)			

## CHARGING TIME

	Small configuration		Charging Time		
Vender	Station mode	Base station	Average power	25Ah	50Ah
Huawei	BTS3205E*3(2*5W)	ATOM	360W(120W/RRU)	3.5	7
Huawei	AAY3240*3	EasyMacro	900w (3PCS, 300w/RRU)	1.5	3
Huawei	RRU3235E*3	BookRRU	270w (3PCS, 90w/RRU)	4.5	9
ZTE	BS8912	MicroBS (1S)	≤100W	12	24
ZTE	BS8922	MicroBS (2S)	120W@Config DL3:UL1 100W@Config DL2:UL2	10	20
ZTE	R8502	PAD RRU	65W(DL:UL=2:2,Typical) 80W(DL:UL=3:1,Typical)	12	24
ZTE	A8712	iMacro	190 W(DL:UL=2:2,Typical) 260W(DL:UL=3:1,Typical)	5	10
Nokia	FWHE	Integrated D frequency	63W(<120W)	10	20
Nokia	FWND	Integrated E frequency	63W(<120W)	10	20
Nokia	FZHS	Distributed micro station	40W(<120W)	10	20
Nokia	FWHX	Integrated high power D	247W	5	10

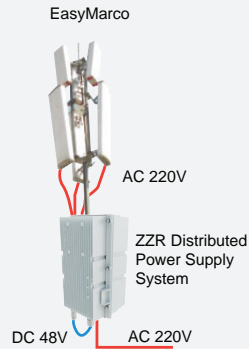


## APPLICATION

### EasyMarco Application

Typical Configuration:

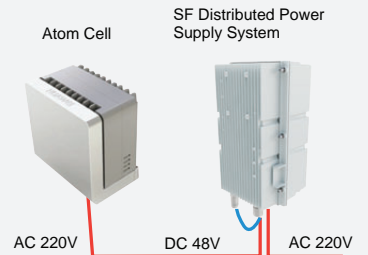
- EasyMacro\*3pcs+AC/AC
- +Lithium Battery\*1pcs
- Charging Time: 1h
- Typical Power : 250W\*3



### Micro Application

Typical Configuration:

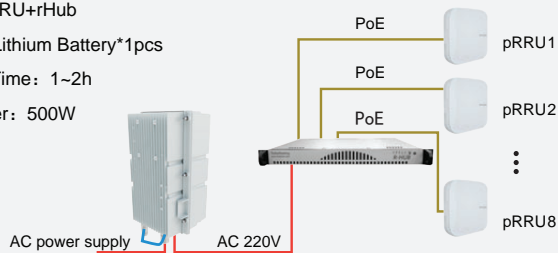
- BTS\*1pcs+AC/AC
- +Lithium Battery\*1pcs
- Charging Time: 3~4h
- Total Power: 210W



### LampSite Application

Typical Configuration:

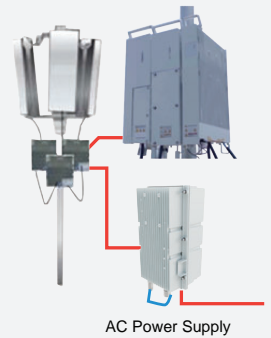
- 1~8pcs pRRU+rHub
- +AC/AC+Lithium Battery\*1pcs
- Charging Time: 1~2h
- Total Power: 500W



### BladeSite Application

Typical Configuration:

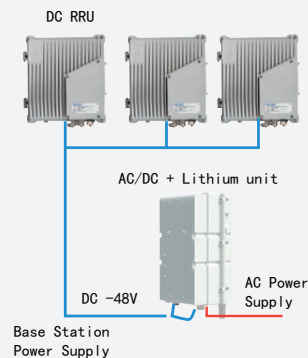
- BBU\*1pcs+RRU\*3pcs
- +AC/DC+Lithium Battery\*2pcs
- Charging Unit: Support the connection of 5 packs
- Charging Time: 2h
- Typical Power: 250W\*3



### Indoor Application

DC RRU Typical Configuration:

- DC RRU(1~3pcs)+AC/DC
- +Lithium Battery\*2pcs
- Charging Time:2h
- RRU Typical Power: 250W\*3



### Indoor Application

AC RRU Typical Configuration:

- DC RRU(1~3pcs)+AC/DC
- +Lithium Battery\*2pcs
- Charging Time: 2h
- RRU Typical Power: 250W\*3

